

General Builder

Facade Specialist Contractor

ID Specialist Contractor



SGFE

W I N D O O R & F A C A D E

6015 0933 / 9177 0633
sales@sgfe.com.sg
www.sgfe.com.sg

SG Facade Engineering Pte Ltd
61 Woodlands Industrial Park
#03-14 E9 Premium
Singapore 757047





About Our Company

Who are we?

SG Facade Engineering Pte Ltd (Short for SGFE) is devoted to the industry of building building facade, interior decoration and general building works. At SGFE, we put our customers before ourselves. We aim to forge and maintain long-standing relationships with our clients – instilling in them, utmost trust and confidence in our services. As such, we are extremely committed in providing an impeccable experience, specially tailored to cater to our clients' every need. We are dedicated in offering quality products at competitive pricings, coupled with top-notch performance.

The development and acceptance of our products are the result of scrupulous planning, starting from finest details and right up to the realisation of a wide range of solutions, characterised by careful design and high level of technical performance guaranteed for each individual component. We seek aesthetic quality, practicality and innovation in the creation of profiles according to the needs of the customer. The acceptance of our products has come from careful attention which SGFE has always paid and invested in until the finest detail.



Technical Support

Thanks to the professionalism and versatility of our technical department, we are able to supply customers with active and complete collaboration in terms of designs, in order to achieve the best results together and to realise a product distinguished by its performance, practicality, simplicity and aesthetic quality. When you deal with SGFE, we are into the finest details of your projects..

Safety Management Policy

"Observing safety at all times in our daily work and environment is the ultimate goal of the Company and the Management in accident prevention."

It is the policy of SGFE, to ensure a safe and healthy working environment for its staffs, workers, sub-contractors and the public, & prevent damage to property & materials. Providing a safe working environment is the responsibility of the Management and the workers. As such, all efforts and resources will be made available to obtain the cooperation and participation of all concerned parties.

No undue risks shall be taken in the name of expedience and all contractors are encouraged to promote safe working practices and good housekeeping among its employees and to maintain equipment in good and safe working order.

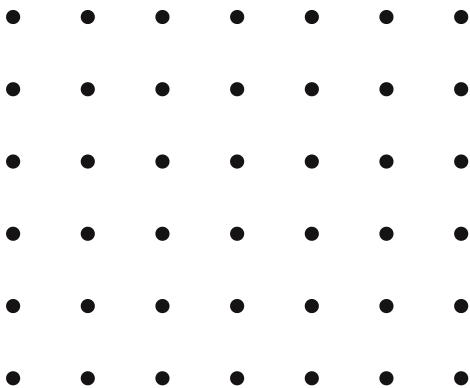
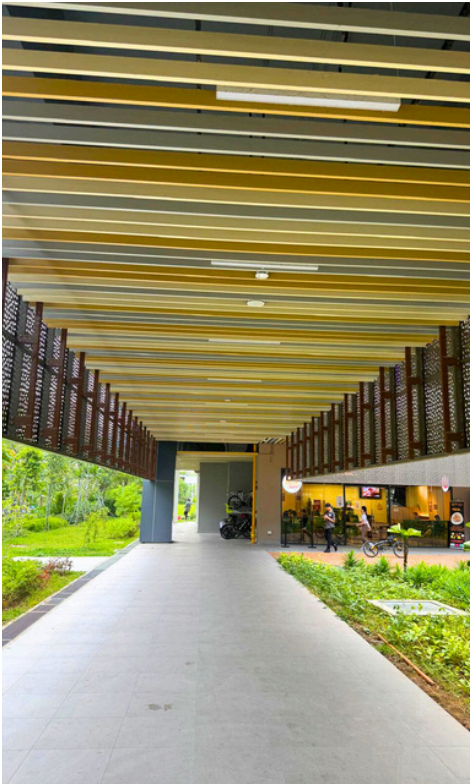
WSH practice and documents are regularly reviewed, updated and improved for a better WSH Management System.

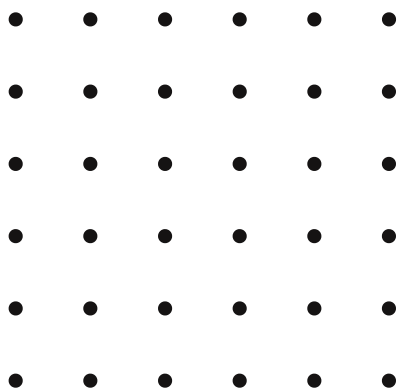
A Safety Statement has been developed to comply with relevant Health & Safety standards and to ensure that clients and employees are fully aware of our commitment to high standards in Health & Safety.



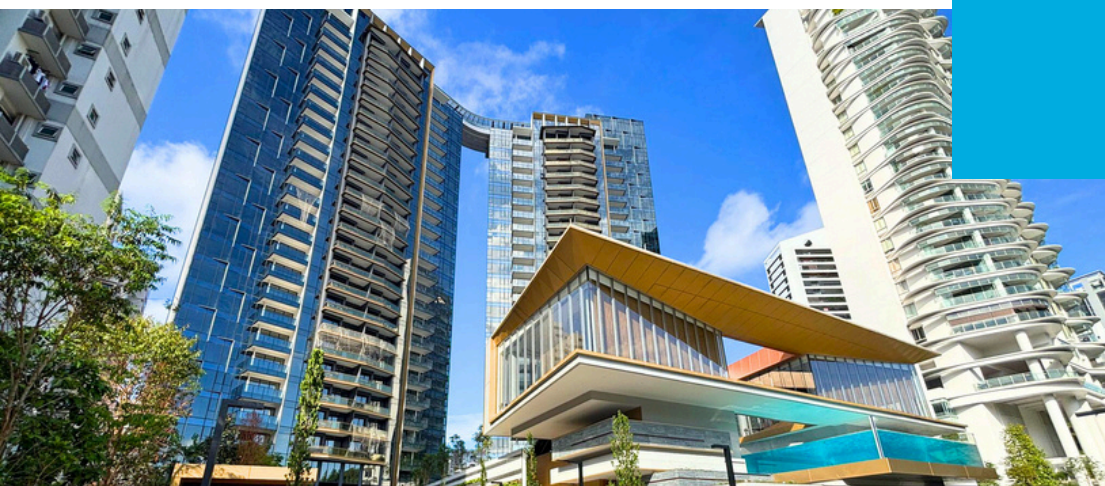
Objectives of the safety statement

- To provide a reference for the policies and procedures used on site and to assess and audit the levels of health and safety being achieved.
- To provide evidence that the policies and procedures to ensure health and safety objectives are met and have been thought out and documented in order to help those who must execute them.
- To provide a control document to record the pertinent changes to the Company Safety Statement, which become necessary due to the changing business environment.
- To help identify training requirements that needs to be fulfilled in order to generate suitably qualified personnel to carry out the policies and procedures contained within the document.
- To provide assurance that compliance with legal requirements for health and safety are being met or exceeded.



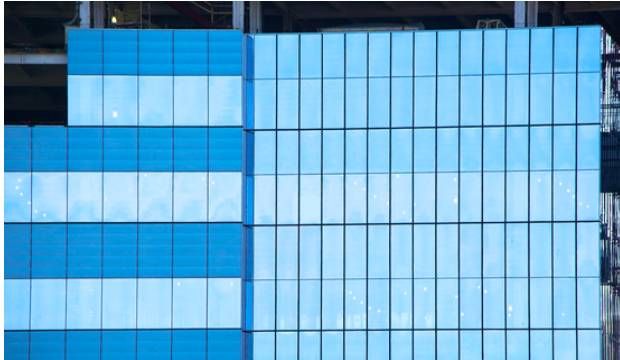


Products & Services





CURTAIN WALL



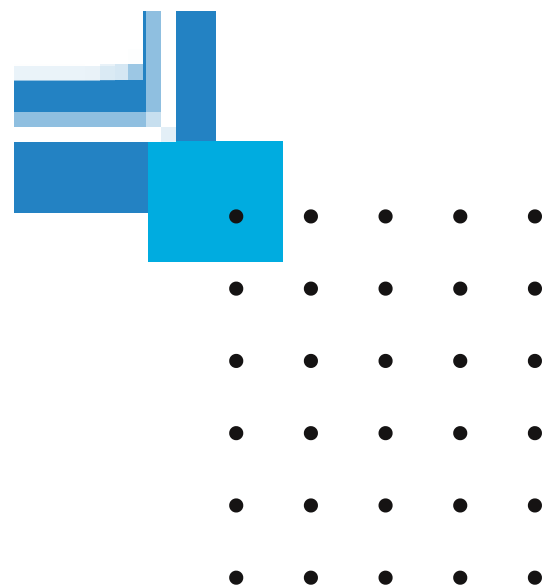
Fully-Unitized System, Pressure Equalized System

Unitized Curtain Walls are factory assembled and glazed, then shipped to the job site in units that are typically one lite wide by one floor height. Only one unit-to-unit splice (usually a silicone sheet or patch) needs to be field-sealed, and only one anchor per mullion needs to be attached to the face or top of the floor slab. Interlocking unitized curtainwall frame members are weatherstripped to seal to one another, both horizontally and vertically. This accommodates thermal expansion and contraction, inter-story differential movement, concrete creep, column foreshortening, and/or seismic movement. Most unitized curtainwall systems are installed in a sequential manner around each floor level, moving from the bottom to the top of the building.



Semi-Unitized System

Semi-unitized Curtain Wall has the combined features of stick curtain wall and unitized curtain wall. Its basic structural principle is to fabricate other curtain wall components with the exception of main keels, to assemble them into unitized panels and then deliver to site to be fixed on main keels.



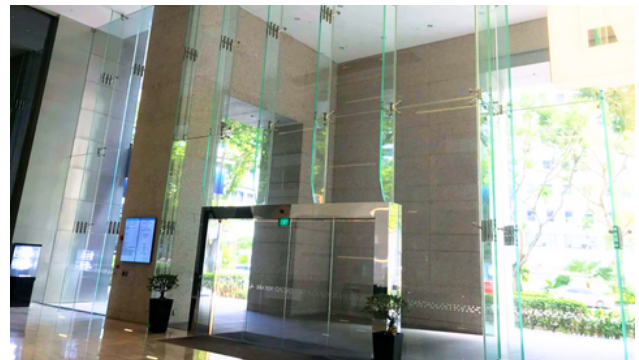
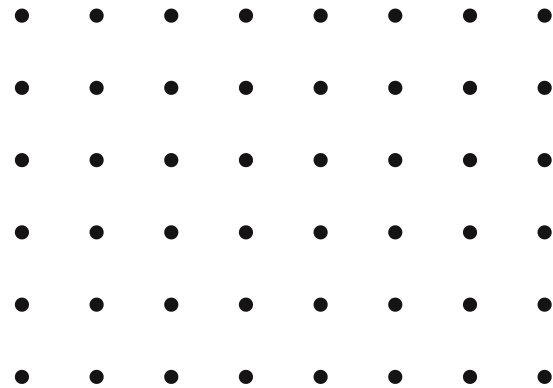


CURTAIN WALL



Stick System

Stick Curtain Wall System is shipped in pieces for field-fabrication or assembly. These can be furnished as "stock lengths" to be cut, machined, assembled, and sealed in the field, or as "knocked down" (KD) parts pre-machined in the factory, for field assembly and sealing only. All stick curtainwalls are field-glazed. Frame assembly requires the use of either, a) "shear blocks" to connect vertical and horizontal framing elements, or b) "screw-spline" construction, in which assembly fasteners feed through holes in interlocking vertical stacking mullions into extruded races in horizontals.



Point Supported Glass System

Point-supported canopies and facades are comprised of stainless steel spider fittings and laminated tempered glass to resist wind load requirements. Glass attachment fittings are designed to flex when the glass is under loading to reduce stresses in the glass at the fitting connections. Spider fittings are typically bolted to a steel back-up structure or structural glass fins.

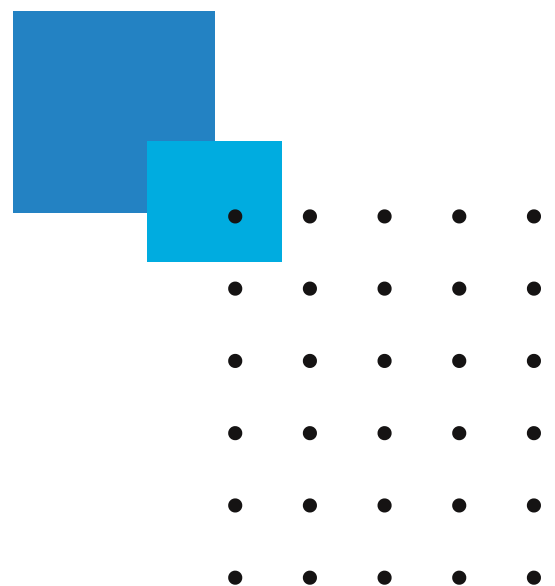


WINDOWS & DOORS

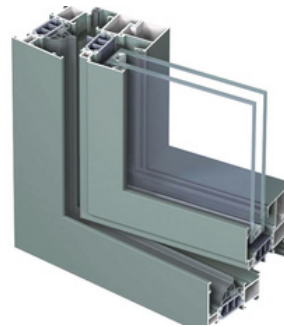


Doors

Windows and Door systems are the basic and fundamental of all building structures. •
Aluminium • UPVC

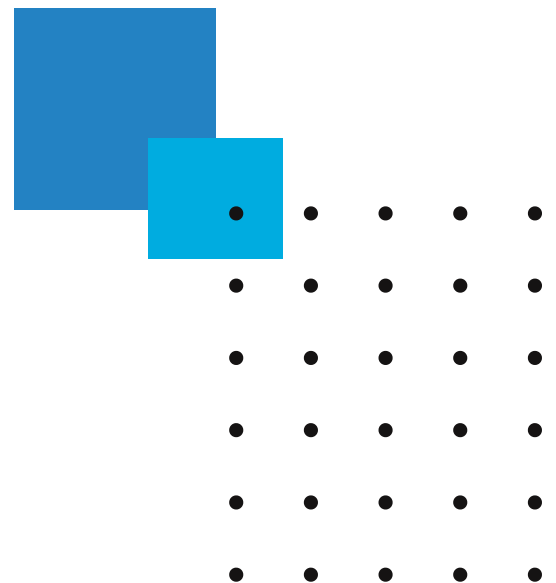


■ WINDOWS & DOORS



Windows

Windows and Door systems are the basic and fundamental of all building structures. • Aluminium • UPVC



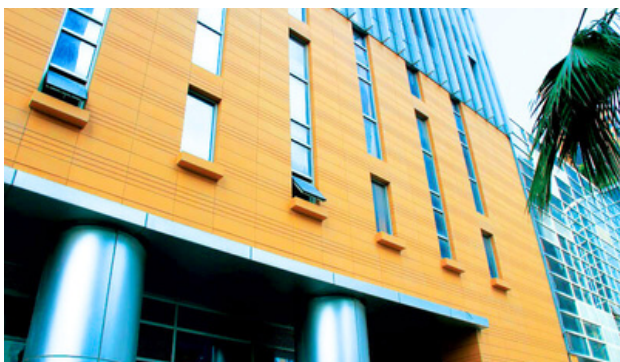


CLADDING SYSTEM



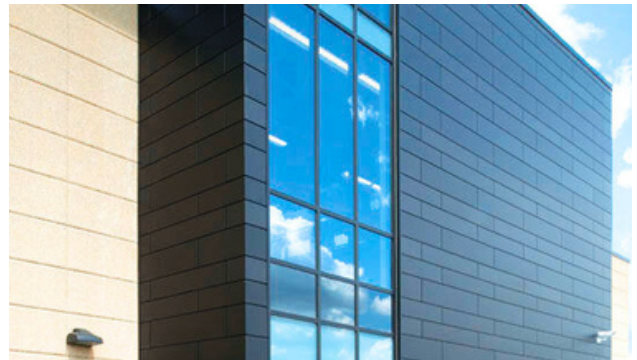
Open Joint System

Aluminium composite materials/ Terracotta/ Vitreous enamel (Heavy gauge or Light gauge) The application of one material over another to provide skin or layer intended to control the infiltration of weather elements, or for aesthetic purposes.



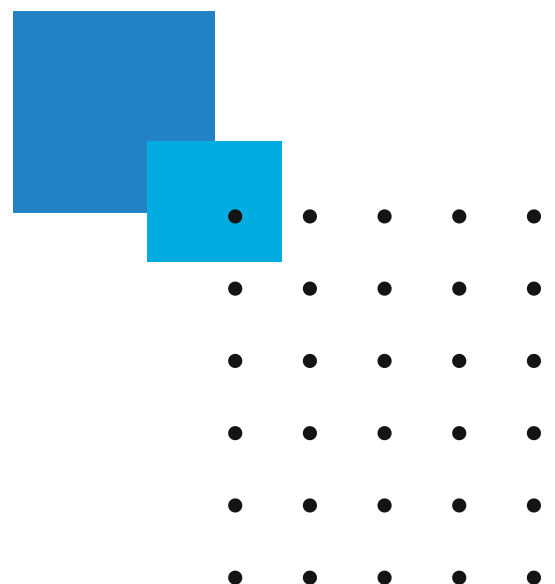
Ventilated System

Aluminium composite materials/ Terracotta/ Vitreous enamel (Heavy gauge or Light gauge) The application of one material over another to provide skin or layer intended to control the infiltration of weather elements, or for aesthetic purposes.



Sealed System

Aluminium composite materials/ Terracotta/ Vitreous enamel (Heavy gauge or Light gauge) The application of one material over another to provide skin or layer intended to control the infiltration of weather elements, or for aesthetic purposes.





ARCHITECTURAL FEATURES



Metal Canopies



Sunshades / Fins



Trellises/ Louvre Screen



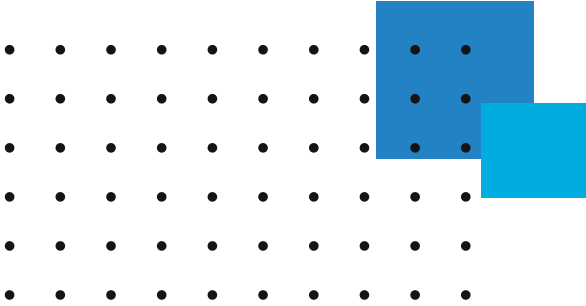
Glass Skylights



ALUMINIUM PERFORMANCE LOUVERS

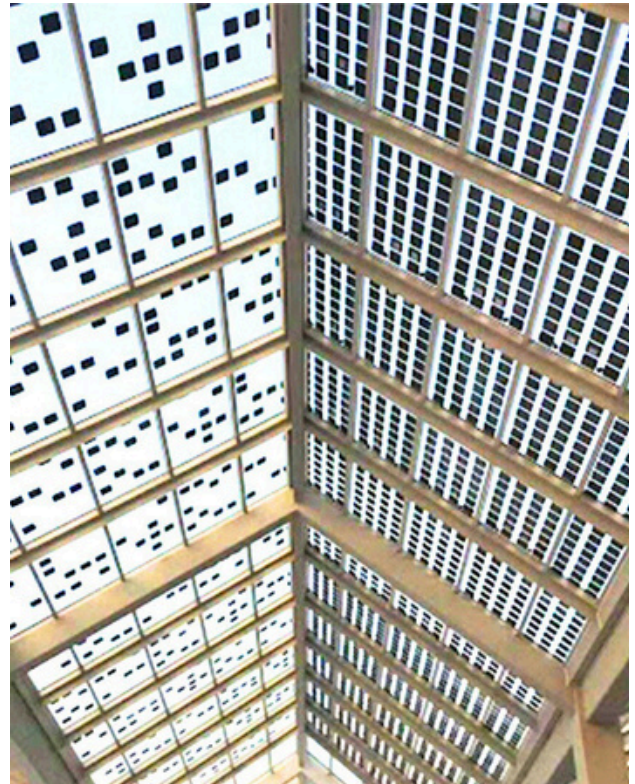


Performance louvers provide ventilation whilst maintaining rain defense into the building when high winds and rain combines. The system balance the rain defense and aerodynamic performance so that maximum airflow can be achieved with the highest rain defense possible. It can be available in Single and Double bank with a wide range of colors and finishes.

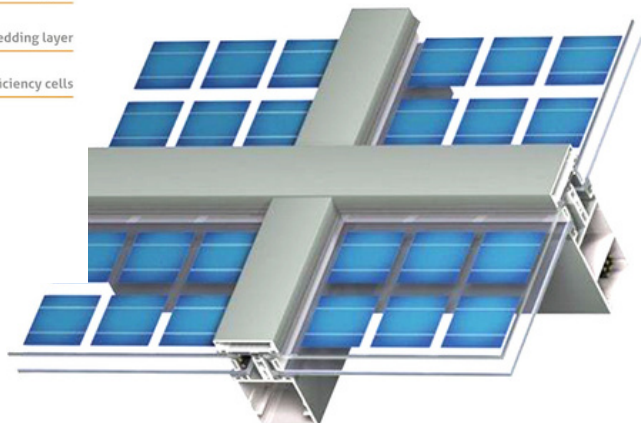
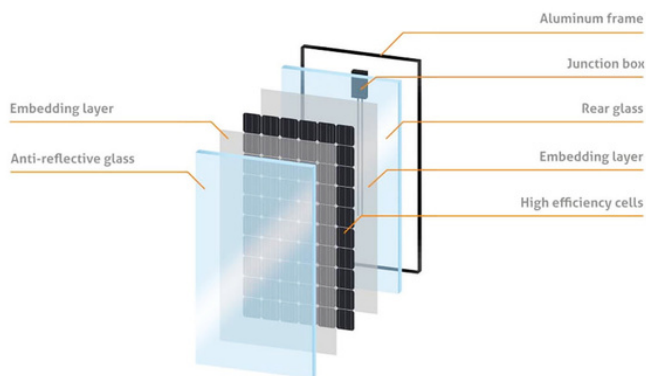




PHOTOVOLTAIC (PV) GLASS SYSTEM



Building-Integrated Photovoltaics (BIPV) is the integration of solar cells into the building envelope. Photovoltaic materials are used to replace conventional building materials in parts of the building envelope such as the roof, skylights, facades, canopies and spandrel glass.

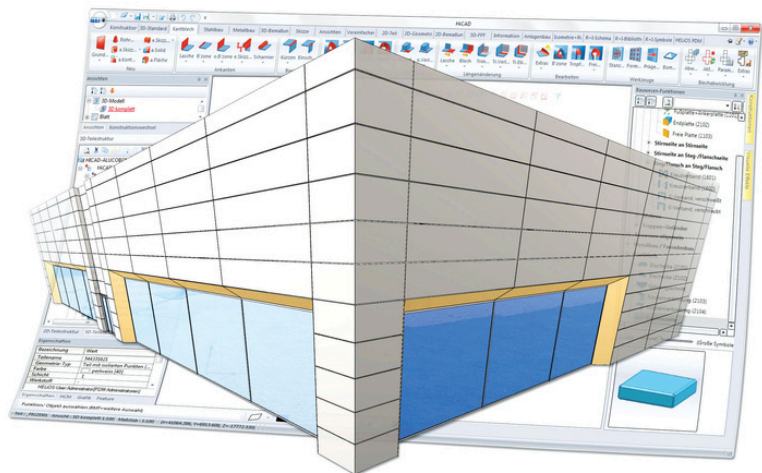




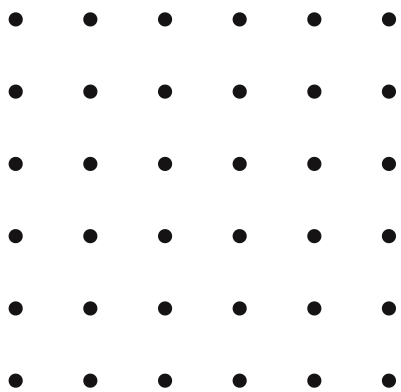
DESIGN AND ENGINEERING



Structural engineering of facade systems includes structural design of cladding systems, specialist engineering analysis of complex 3-D or lightweight facade structures. Glass, terracotta, timber, GRC and membrane facades are examples of some of the elements that require specialist design of the structure and the implication onto primary building structural frame.



The coordination between structure and facade components is essential to avoid construction issues caused by incompatible movement and tolerances between structural frame and cladding elements. The structure-facade interface is especially critical in tension and lightweight structures where the definition and impact of high reaction and movement sensitivity are paramount.



Project Reference





BULIM INFRA PHASE 1

Developer:

JTC Corporation

Client:

China State Construction Engineering Corporation Ltd (Singapore Branch)

Architect:

Surbana Jurong Consultants Pte Ltd

Scope of Works:

Weather-proof Performance Louvers, Aluminium Façade Cladding, Perforated Rain-screen

Completion:

2024

Capacity:

Subcontractor





DAKOTA ONE

Developer:

Housing Development Board

Client:

Cycle & Carriage Industries Pte Ltd

Architect:

AWP Pte Ltd

Scope of Works:

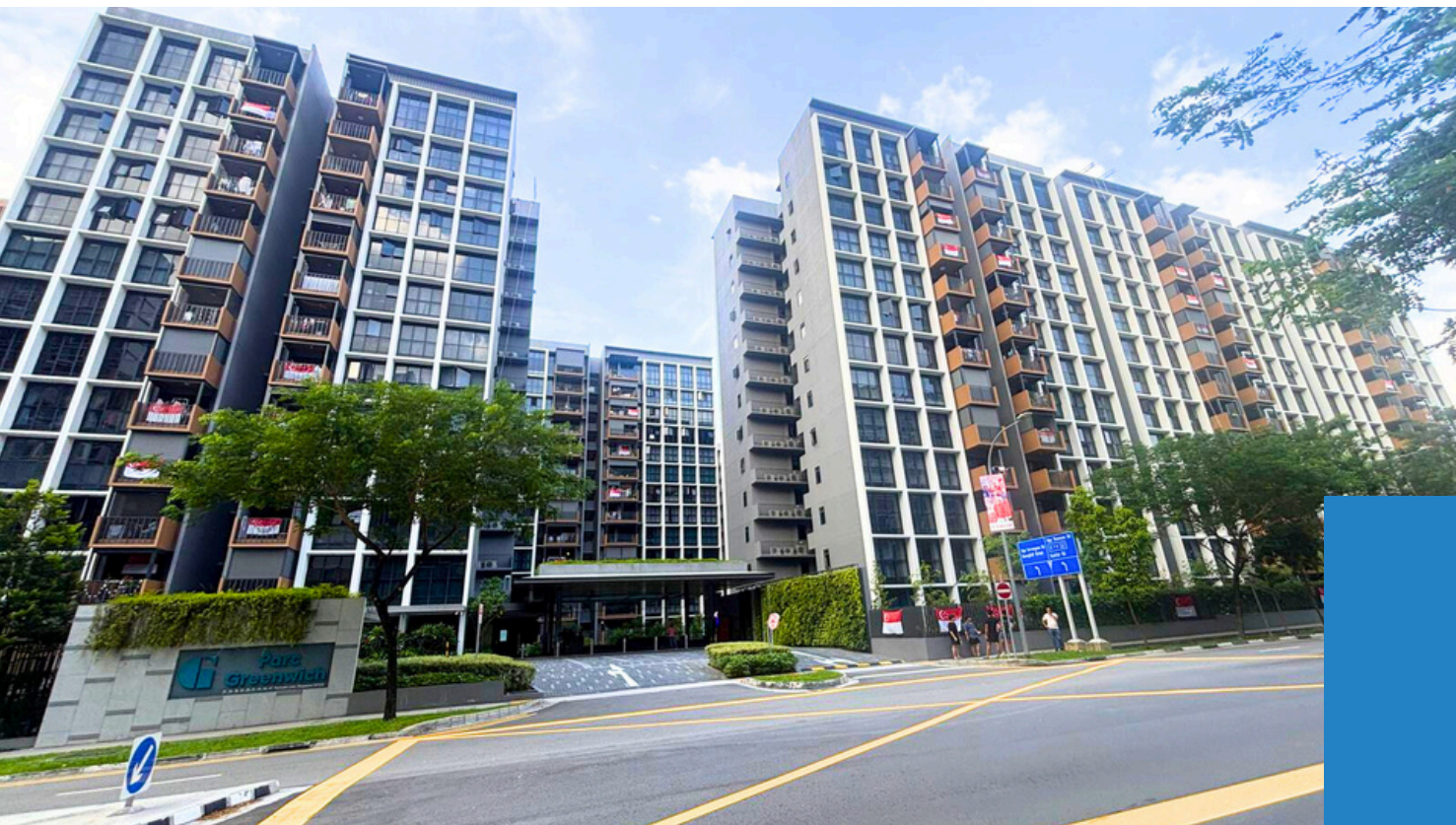
Fire-rated Box-up, Aluminium Baffle Ceiling,
Acoustic Baffle Ceiling

Completion:

2025

Capacity:

Subcontractor



PARC GREENWICH EC

Developer:

Frasers Property Limited

Client:

Rich Construction Company Pte Ltd

Architect:

ADDP Architects LLP

Scope of Works:

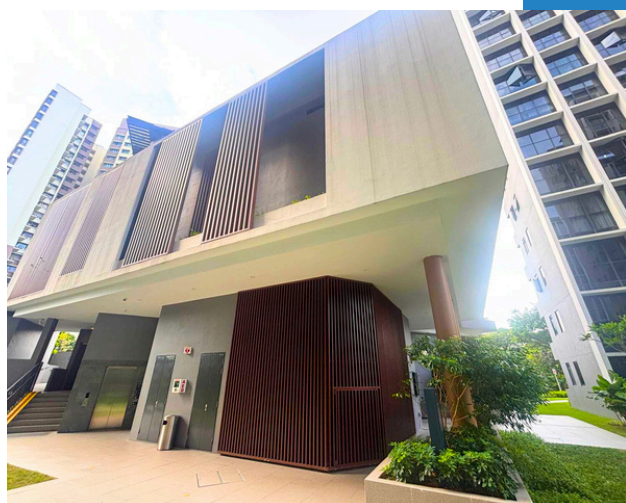
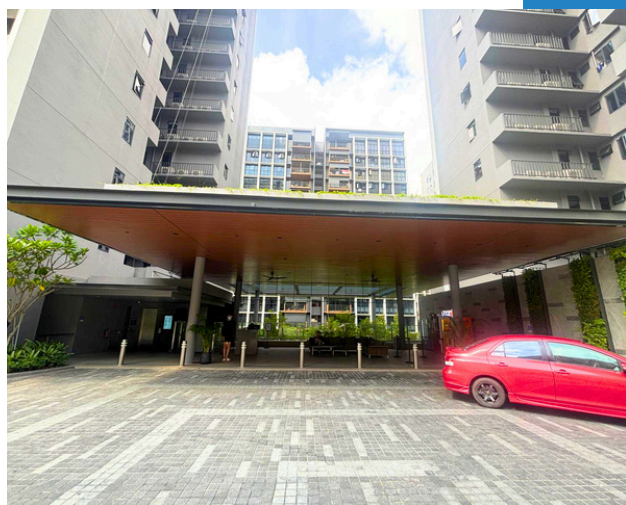
Aluminium Façade Cladding, Façade Trellis,
Aluminium Strip Ceiling

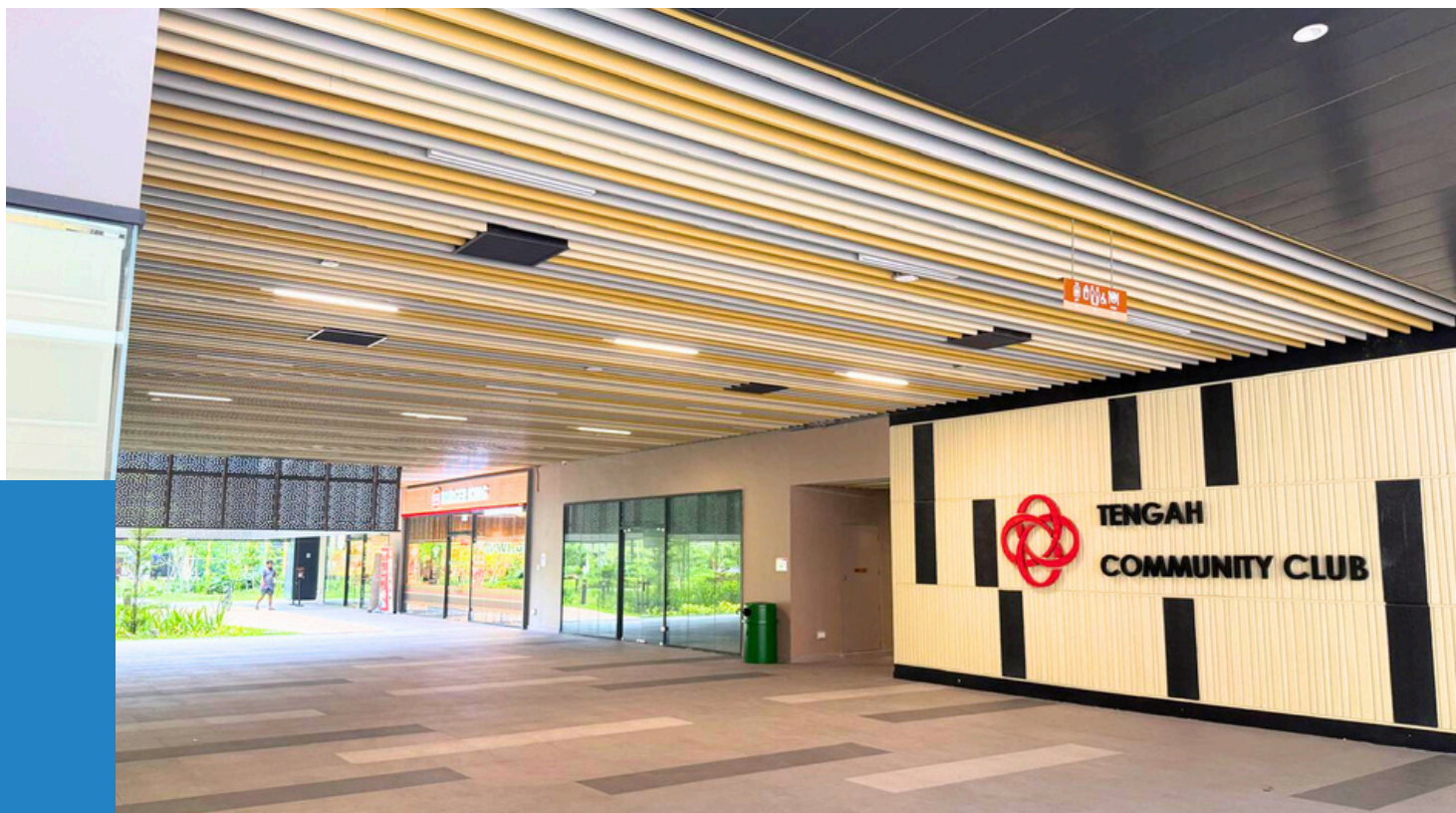
Completion:

2024

Capacity:

Subcontractor





TENGAH PLANTATION C2

Developer:

Housing Development Board

Client:

China Construction Realty Company Pte Ltd

Architect:

Kyoo Architects Pte Ltd

Scope of Works:

Fire-rated Box-up, Aluminium Baffle Ceiling, Acoustic Baffle Ceiling

Completion:

2024

Capacity:

Subcontractor



TOA PAYOH RIDGE

Developer:

Housing Development Board

Client:

Rich Construction Company Pte Ltd

Architect:

Ong & Ong Pte Ltd

Scope of Works:

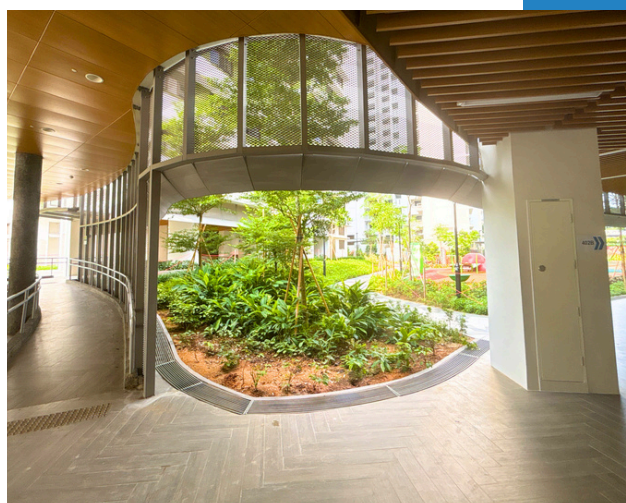
Aluminium Façade Cladding, Façade Trellis,
Aluminium Aerofoil Screen

Completion:

2025

Capacity:

Subcontractor





ST PETER & PAUL CHURCH PARISH BUILDING



Developer:

St Peter & Paul Church

Client:

KTZ Construction Pte Ltd

Architect:

A D Lab Pte Ltd

Scope of Works:

Glass Curtain Wall, Glass Canopy,
Aluminium Performance Louver,
Aluminium Cladding

Completion:

2021

Capacity:

Subcontractor



FACILITIES BUILDINGS AT TANAH MERAH ROAD AND AVIATION PARK ROAD

Developer:

Civil Aviation Authority Singapore

Client:

Prelim Construction Pte Ltd

Architect:

Design Link Architects Pte Ltd

Scope of Works:

GFRC Façade Cladding, Aluminium Façade
Screen, Louver Doors

Completion:

2021

Capacity:

Subcontractor





239 ALEXANDRA ROAD

Developer:

Cycle & Carriage Industries Pte Ltd

Client:

Cycle & Carriage Industries Pte Ltd

Architect:

Super Assembly Pte Ltd

Scope of Works:

Replacement of the Whole of the Aluminium Façade Cladding

Completion:

Expected Completion – 2026

Capacity:

Main Contractor



TENGAH DEPOT FOR JURONG REGION MRT LINE

Developer:

Land Transport Authority

Client:

China Railway 11 Bureau Group (Singapore Branch)

Architect:

Ong & Ong Pte Ltd

Scope of Works:

Unitized Glass Curtain Wall, Interior Glass Partitions, Aluminium Façade Cladding, Weather-proof Performance Louvers, Louver Doors

Completion:

Expected Completion – 2026

Capacity:

Subcontractor





PERFECT TEN CONDOMINIUM

Developer:

Japura Development Pte Ltd

Client:

China Construction (South Pacific)
Development Pte Ltd

Architect:

DP Architects Pte Ltd

Scope of Works:

Slim-profile Sliding Doors, Aluminium
Façade Cladding, Main Entrance Gates,
Aluminium Trellis and Louvers

Completion:

Expected Completion – 2025

Capacity:

Subcontractor



TENGAH PLANTATION C5

Developer:

Housing Development Board

Client:

Rich Construction Company Pte Ltd

Architect:

Surbana Jurong Consultants Pte Ltd

Scope of Works:

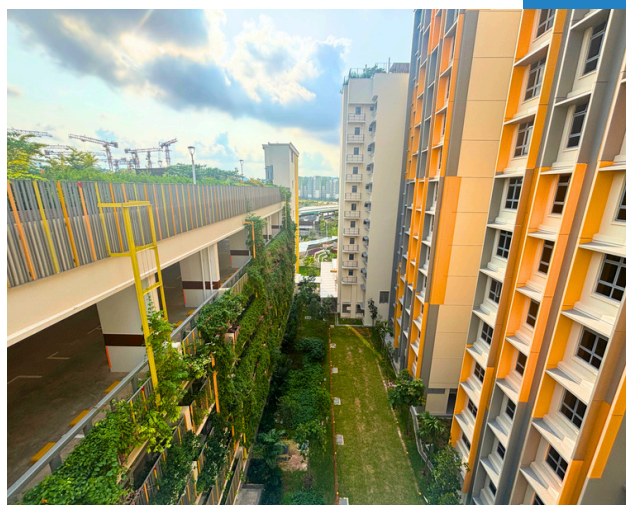
Aluminium Façade Screen

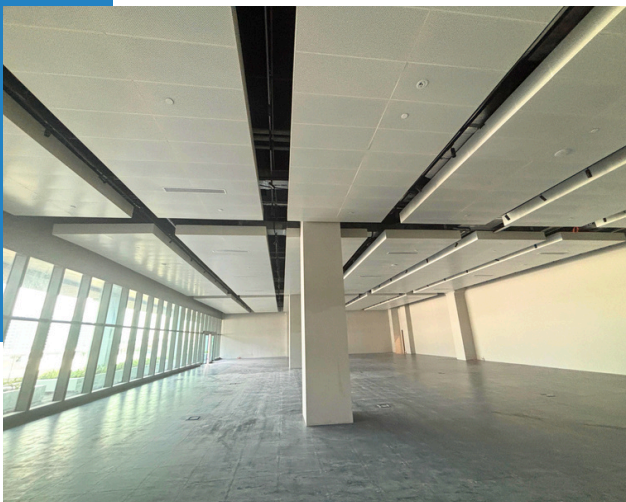
Completion:

Expected Completion – 2025

Capacity:

Subcontractor





BULIM SQUARE

Developer:

JTC Corporation

Client:

Rich Construction Company Pte Ltd

Architect:

SAA Architects Pte Ltd

Scope of Works:

Aluminium Baffle Ceilings, Acoustic
Aluminium Baffle Ceilings, Acoustic Metal
Ceilings

Completion:

Expected Completion – 2025

Capacity:

Subcontractor



LOYANG WAY BUS DEPOT

Developer:

Land Transport Authority

Architect:

Arclub Architects Pte Ltd

Scope of Works:

Aluminium Louvers, Aluminium Glass Windows





BOON KENG 66KV SUBSTATION

Developer:

JTC Corporation

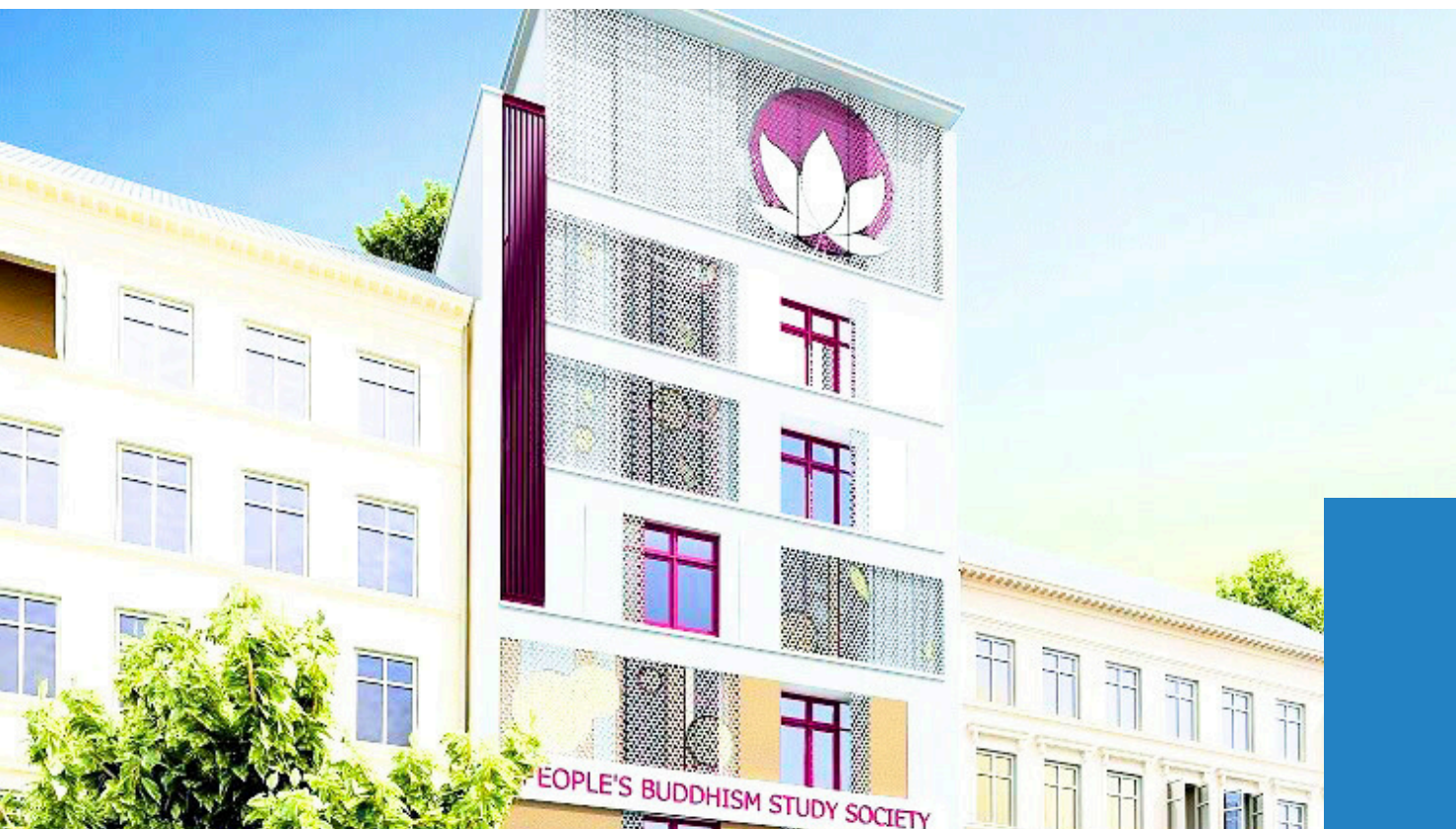
Architect:

Zarch Collaboratives Pte Ltd

Scope of Works:

Performance Louvers, Precast Façade Walls, Aluminium Cladding





PEOPLE'S BUDDHISM STUDY SOCIETY

Developer:

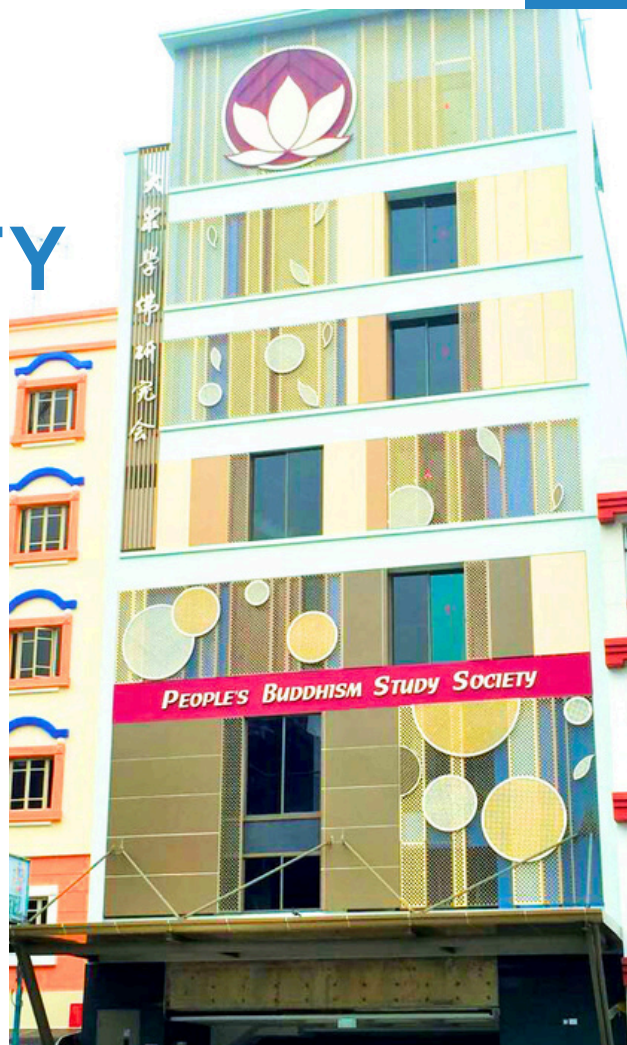
People's Buddhism Study Society

Architect:

Arya Architects Pte Ltd

Scope of Works:

Aluminium Cladding, Main Entrance Gate





EDEN SCHOOL CAMPUS

Developer:

Ministry of Education

Architect:

MKPL Architects Pte Ltd

Scope of Works:

Aluminium Glass Curtain Wall, Swing Doors,
Glass Skylight



14 BISHOPSGATE

Developer:

Private Owner

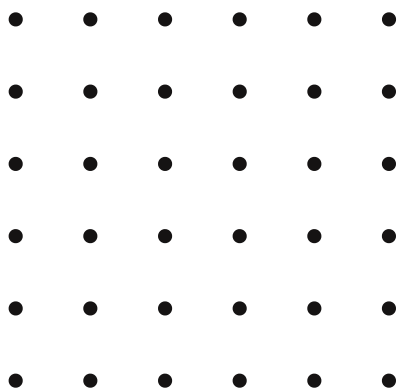
Architect:

K2LD Architects

Scope of Works:

Aluminium Glass Windows and Doors,
Terracotta Cladding, Metal Cladding





SGFE

W I N D O O R & F A C A D E

6015 0933 / 9177 0633

sales@sgfe.com.sg

www.sgfe.com.sg

SG Facade Engineering Pte Ltd

61 Woodlands Industrial Park

#03-14 E9 Premium

Singapore 757047